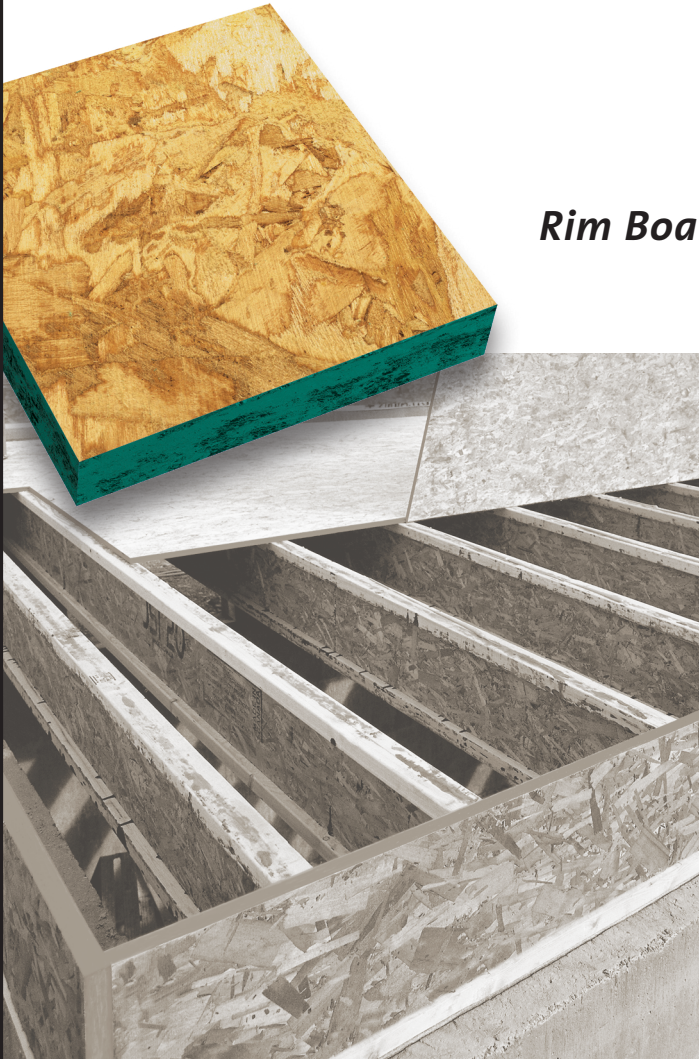


## RIM BOARD

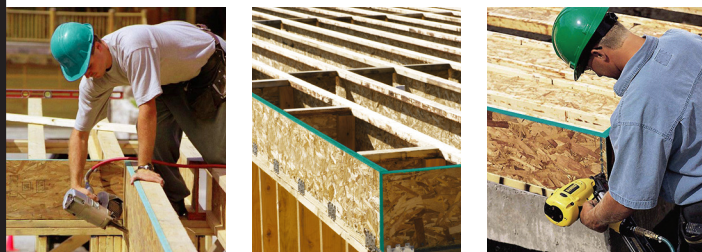
**Rim Board—Carries the load**

For affordable flooring systems that lay flat and true, experienced builders trust **Norbord®** rim board. Together with the I-joists, it's the rim board that carries the floor's weight from above. For a durable long-lasting floor that installs quickly, and carries the load for years of use, you need the dimensional consistency, strength and structural reliability of APA performance-rated rim board products from **Norbord**.

Since 1952, construction professionals have trusted Norbord for advanced technologies, quality manufacture, sustainable forest practices and reliable supply. All **Norbord** rim board products are precision-manufactured in North America in the sizes you need for the job. And, of course, they're all backed by the Norbord guarantee of quality. That's why they're the builder's choice for framing engineered wood floors.

**Environmentally committed**

Norbord is committed to maintaining the integrity of the environment through responsible and sustainable forest management and stewardship. For more on our comprehensive environmental policies, visit [www.norbord.com](http://www.norbord.com).



Look for the **Turquoise®** edge



*Norbord rim board qualifies as Sustainable Forest Initiative® (SFI®) certified sustainable® and PEFC chain of custody verified products. They are manufactured in advanced facilities, with all process parameters monitored and controlled to ensure that they meet demanding APA Rim Board specifications, including low moisture content.*

SFI Licensed Logo Marks are registered marks owned by Sustainable Forestry Initiative Inc.

## RIM BOARD

**Rim Board—Carries the Load****Rim Board / Rim Board Plus**

The economical alternatives for engineered flooring systems. Rim Board is available in thicknesses of 1", and 1<sup>1</sup>/<sub>8</sub>". Enhanced-performance Rim Board Plus is available in thicknesses of 1", 1<sup>1</sup>/<sub>8</sub>" and 1<sup>1</sup>/<sub>4</sub>".

**0.8E Durastrand® Rimboard**

A proprietary product developed for maximum strength and stability. Custom-engineered and fully code compliance evaluated, Durastrand Rimboard ties a floor system together, transferring the forces and securing a house against strong winds, powerful earthquakes and heavy vertical loads.

**Norbord** Rim Board and Rim Board Plus products are available with termite-resistant treatment. Available upon request. Conditions apply.

**For today's advanced flooring systems**

Sawn lumber, the traditional source of rim boards, is not compatible with the new generation of wood I-joists used in floor construction. For I-joist based flooring, engineered wood rim boards from Norbord provide the precision and consistency of manufacture, and are available in the sizes and depths that exactly match the I-joist floor members. The result is a complete engineered flooring system with rim boards that support the wall loads and tie the floor joists together.

**RIM BOARD DIMENSIONS**

	THICKNESS	DEPTH	LENGTH
Rim Board	1", 1 <sup>1</sup> / <sub>8</sub> "	9 <sup>1</sup> / <sub>2</sub> ", 11 <sup>7</sup> / <sub>8</sub> ", 14", 16", 18", 20", 22", 24"	12' or 24'
Rim Board Plus	1 <sup>1</sup> / <sub>8</sub> ", 1 <sup>1</sup> / <sub>4</sub> "		
0.8E Durastrand Rimboard	1 <sup>1</sup> / <sub>4</sub> "		

Designing for the superior vertical and lateral load capacity of our proprietary 0.8E Durastrand Rimboard? Contact us for engineering specifications or visit our website.  
[www.norbord.com](http://www.norbord.com)

**Certifications**

Rim Board/ Rim Board Plus

- APA quality assured
- SFI & PEFC Chain of Custody

0.8E Durastrand Rimboard

- APA quality assured
- ICC-ES (ESR-1053)
- City of Los Angeles (RR 25545)
- SFI & PEFC Chain of Custody

**Care & Handling**

- Ship rim board under a tarp and store appropriately to avoid excessive moisture.
- When storing outdoors, loosely cover rim board with waterproof material such as an opaque tarp. Allow for air circulation under the material.
- Rim board should be set on a minimum of four supports to keep it above the ground and to minimize sagging.
- Avoid dropping rim board on corners or edges.
- When using a forklift, place rim board on a pallet to avoid damage from the forklifts.



**WARNING:** Drilling, sawing, sanding or machining wood products generates wood dust and other substances known to the State of California to cause cancer. Avoid inhaling dust generated from wood products or use a dust mask or other safeguards to avoid inhaling dust generated from wood products. Wood products emit chemicals known to the State of California to cause birth defects or other reproductive harm. California Health and Safety Code Section 25249.6

For more information, please contact-

**Norbord Inc.**  
info@norbord.com  
[www.norbord.com/rimboard](http://www.norbord.com/rimboard)

